

## Product Installation Manual

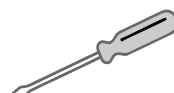
**SKU**  
**KC-104**



**Tools Required  
(Not Included)**



**Hammer**



**2-in-1  
Screw Driver**

**00:45**

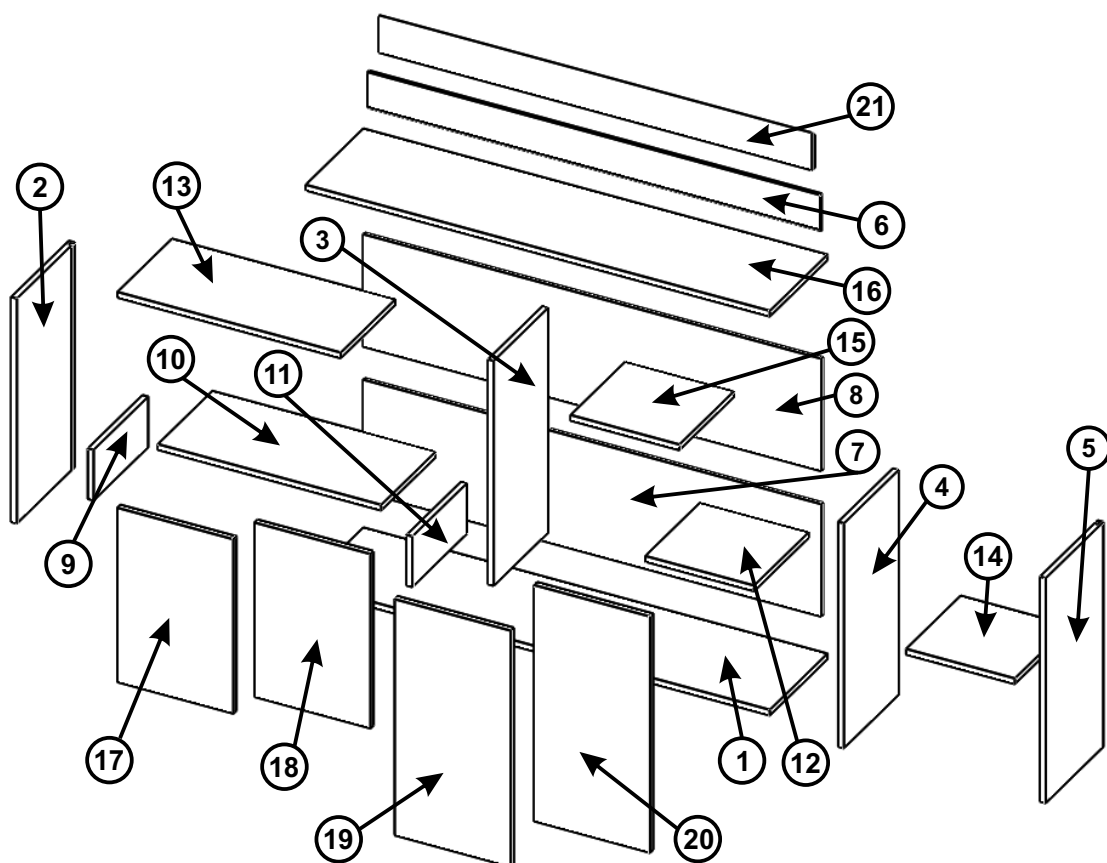
Approx 45 mins



Recommended  
2 Person

**20KG**

Recommended.Max  
Weight



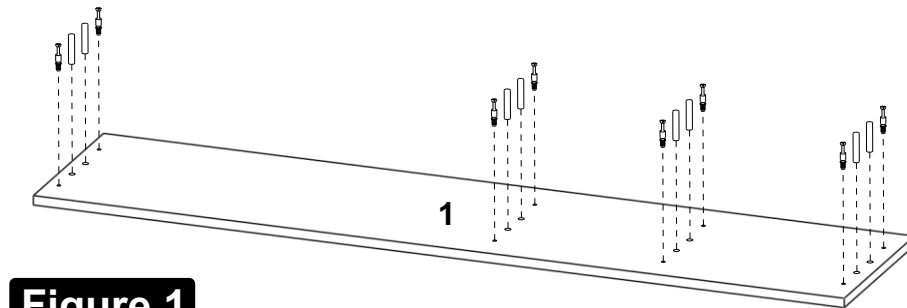
## Exploded View

Packing List	Qty	Minifix Bolt	28	Handle Screw	8
Wooden Boards (assorted sizes)	21	Dowel	28	Bullet Pins	16
Board Screw (3.5 X 16 mm) Black	8	Door hinge	8	Wall plug and screw	8 Each
Minifix Housing	28	Handle	4		

### Useful Hints Before You Start:

1. Read all instructions carefully before beginning the assembly.
2. Follow each step in the correct order to avoid difficulties during the process.
3. Assemble the furniture on a clean, flat, and soft surface to prevent any damage to the parts.
4. Identify all boards and hardware items (such as nuts, bolts, hinges, dowels, etc.) before starting.

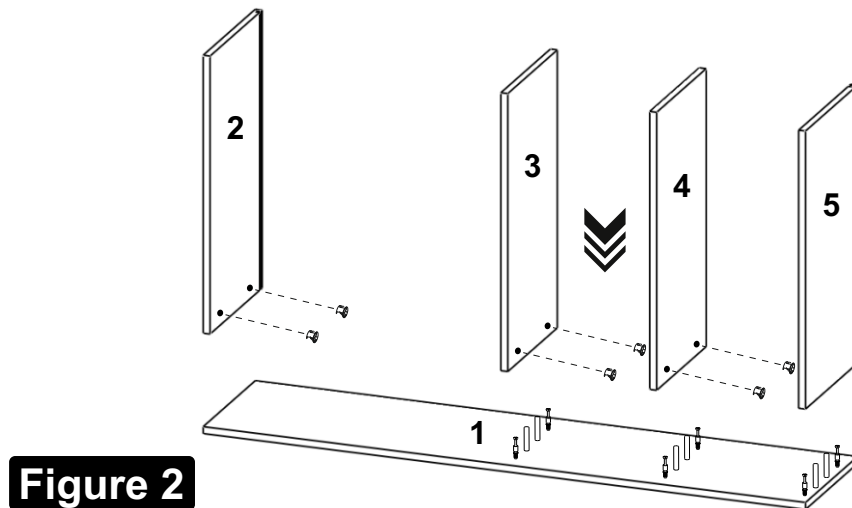
**Step 1 :** Insert **Dowels** and **Minifixes bolt** into **Board 1** as shown in **Figure 1**.



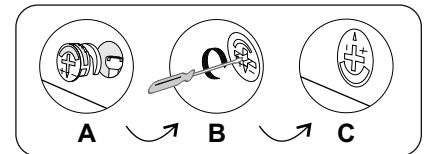
**Figure 1**



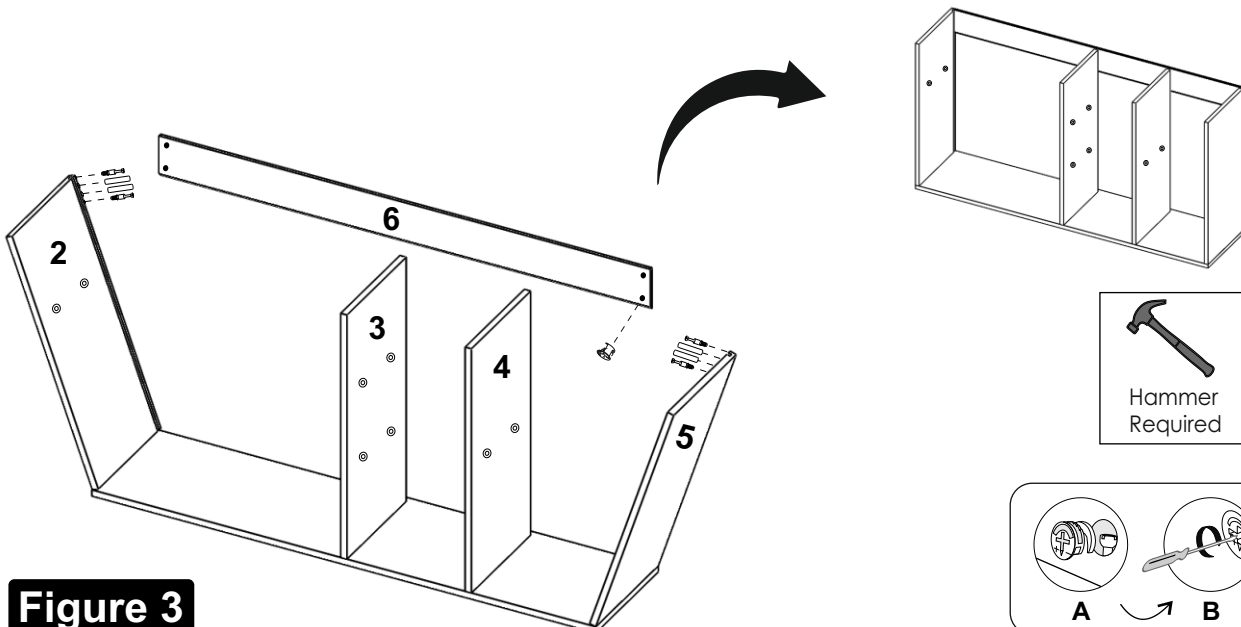
**Step 2 :** Keep **Board 2, 3, 4, & 5** on **Board 1** as Shown in **Figure 2**. Fasten the **Minifix Housing** on **Board 2, 3, 4 & 5**.



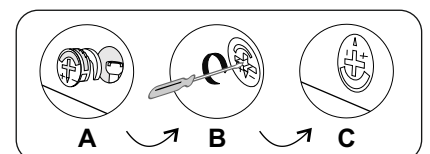
**Figure 2**



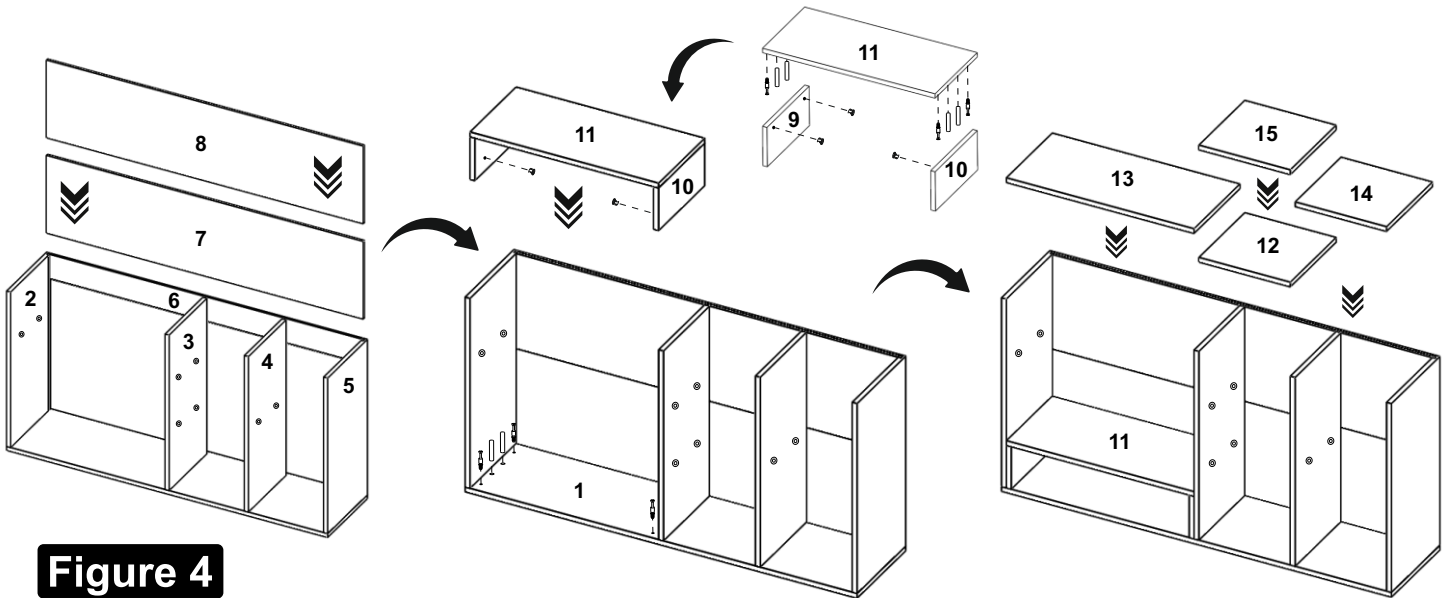
**Step 3 :** Fix **Minifixs & Dowels** on **Board 2 & 5** as shown in **Figure 3**, Tilt **Board 2 & 5** a little to fix **Board 6**. Fasten the **Minifix Housings** as shown in figure below.



**Figure 3**



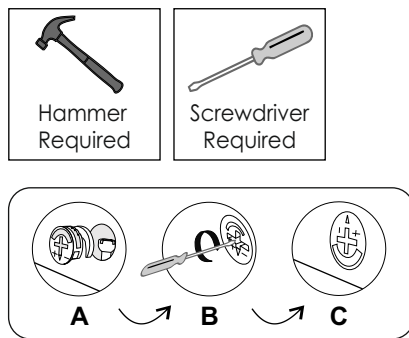
**Step 4 :** Slide the **Board 7 & 8** in the grooves of **Board 2 & 5**. Assemble **Board 9, 10 & 11** on **Board 1** as shown and then fix it into main assembly. Place **Board 12, 13, 14 & 15** on Bullet Pins as shown in figure.



**Figure 4**

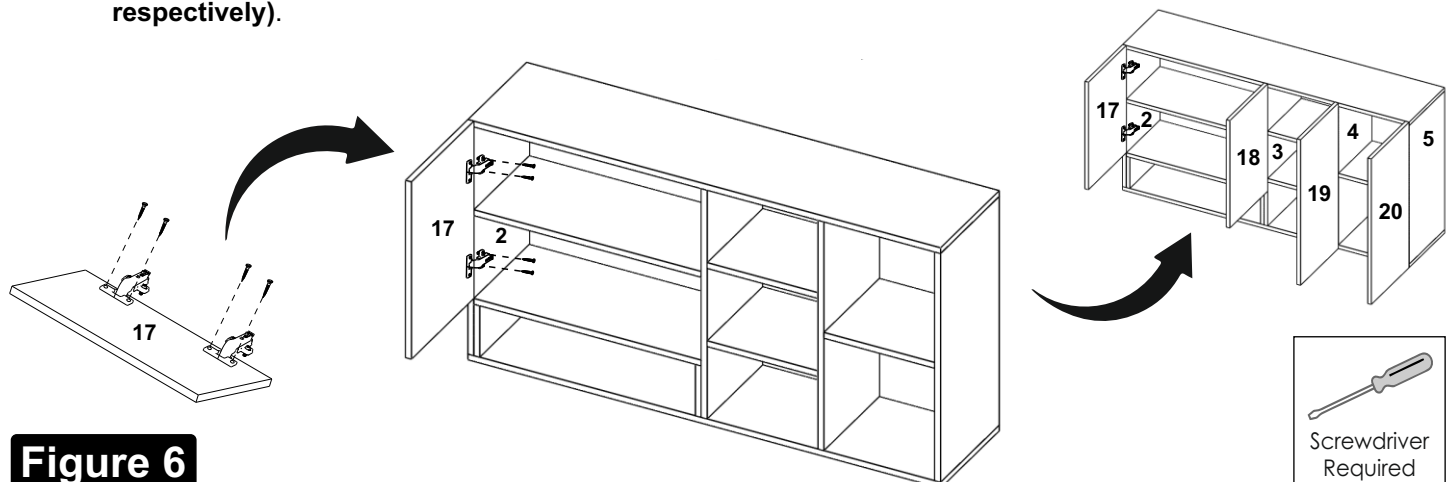
**Step 5 :** Insert **Dowels** and **Minifixs Bolt** into **Board 16** as shown in **Figure 5**.

Insert **Minifix Housings** in **Board 2, 3, 4 & 5** and join **Boards 16** as shown in figure, fasten minifixs housing in **Boards 2, 3, 4 & 5** with the help of screw driver as shown in figure below.



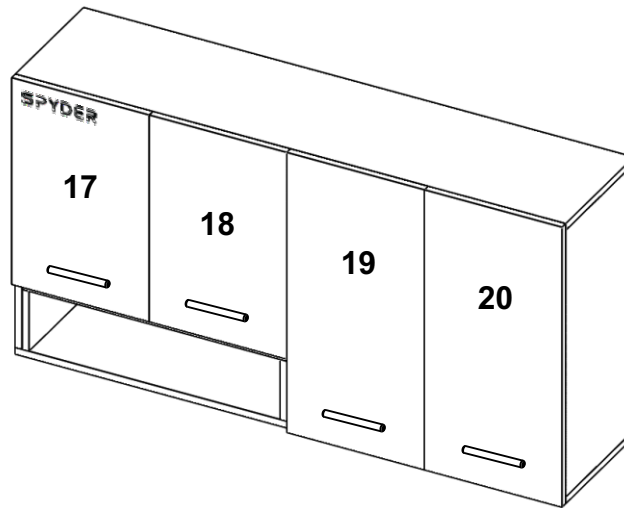
**Figure 5**

**Step 6 :** Join **Board 2 & 17** as shown in Figure below. Fix the **Door Hinges** with the help of **(2 x 4 screw)** on **Board 2 & 17** fasten it with Screw Driver as shown. Similarly affix the other doors (**Board 18, 19 & 20 on Board 3, 4 & 5 respectively**).



**Figure 6**

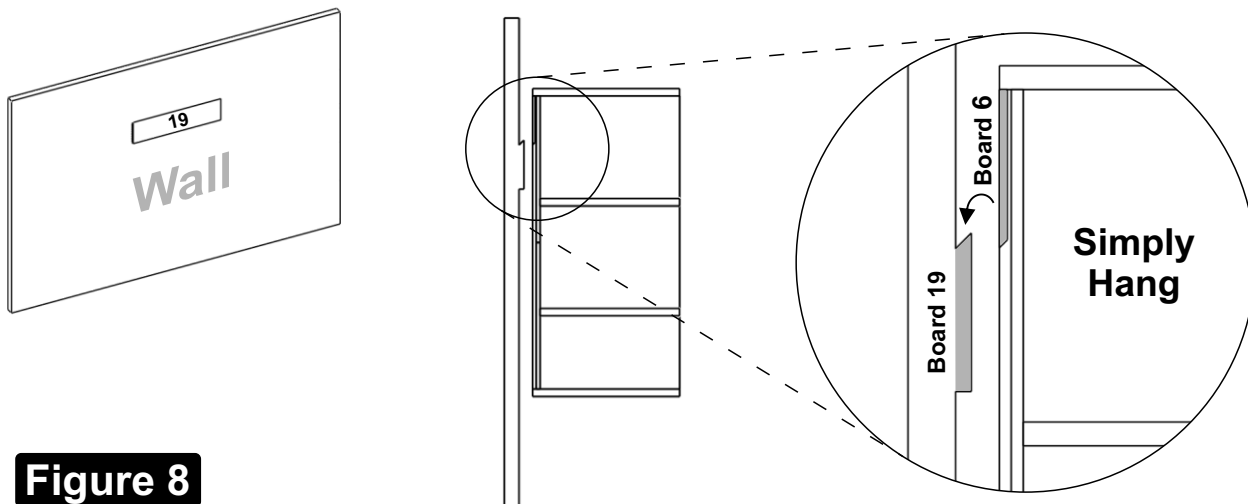
**Step 7 :** Fasten Handle with screw on **Board 17, 18, 19 & 20** (Doors).



**Figure 7**



**Step 8 :** Affix **Board 21** on wall. Hang the Cabinet assembly onto the **Board 6** as shown in Figure 8.



**Figure 8**

**“All we need is customers valueable feedback.  
That’s how we’ll improve.”**

**Need help in Assembling?**

- Having trouble installing this product?
- Need a paid professional carpenter?
- You can now avail our paid installation service.  
(Available at selected locations only)

**Contact our support team**



1800-572-3961



support@spydergreen.com

## Return and Refund Policy

- Returns are accepted within 10 days of delivery.
- Refunds will be processed only if the delivered product is damaged, non-functional, and unused.
- Customers must provide evidence of the defect, such as clear photographs or videos that highlight the issue, when requesting a return or refund.
- The product must be returned in its original packaging and must not be further damaged.
- All accessories, manuals, and other included items must be returned in full and must not be missing.

## Replacement Process & Conditions

Spyder Green provides an easy and hassle-free replacement process.

- A replacement can be requested if the item delivered is damaged, defective, not as described, or if a wrong item has been received within 10 days of delivery.
- We usually arrange a pickup of the original item and deliver the replacement at the same time, ensuring a smooth and hassle-free exchange experience.
- If the product was purchased from an e-commerce platform, you can place a replacement request directly through the 'Orders' section on that platform.
- We offer repair assistance through a scheduled technician visit, which is a chargeable service. If needed, the technician may replace defective parts. If the issue persists after replacement, we approve a full product replacement.
- Replacement is subject to stock availability. In case a replacement is not available, we may offer a refund as an alternative.

## Warranty Terms and Conditions

All Spyder Green's products are covered under a 1-year warranty against manufacturing defects. The warranty is applicable only upon presentation of the original purchase invoice at the time of service.

### Warranty Covers :

- Manufacturing and workmanship defects under normal household use
- Issues like color fading, termite or fungus

### Warranty Does Not Cover :

- Damages due to misuse, mishandling, or negligence
- Incorrect customer-led assembly
- Continuous exposure to moisture, heat, or chemicals
- Damage caused by natural calamities
- Normal wear and tear from regular use
- Damage due to unauthorized modifications or alterations
- Wood expansion/contraction or natural defects (grain, joint separation)

This warranty is non-transferable, valid only within India, and applicable exclusively to the original end-user customer. Replacement parts will be provided free of cost for covered issues; however, technician visit charges may apply.



# Scan for Installation Video Link

Go to our You Tube page,  
Search video by entering your Product SKU Number.