

Product Installation Manual

SKU
KC-114



Tools Required (Not Included)



Hammer



2-in-1
Screw Driver

00:45

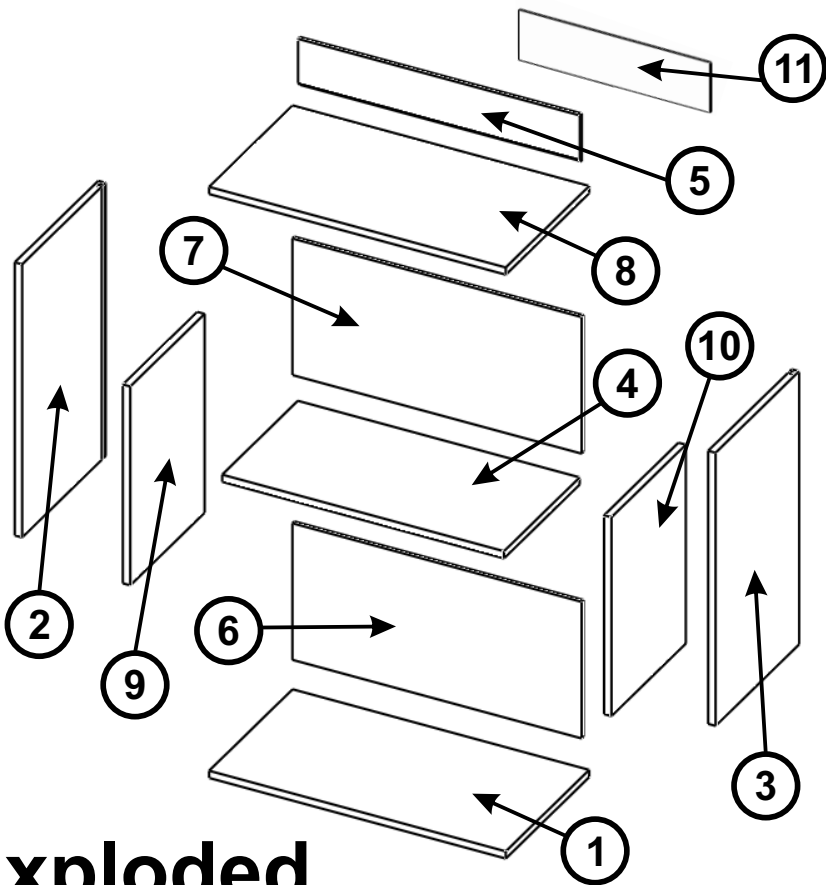
Approx 45 mins



Recommended
2 Person

20KG

Recommended.Max
Weight



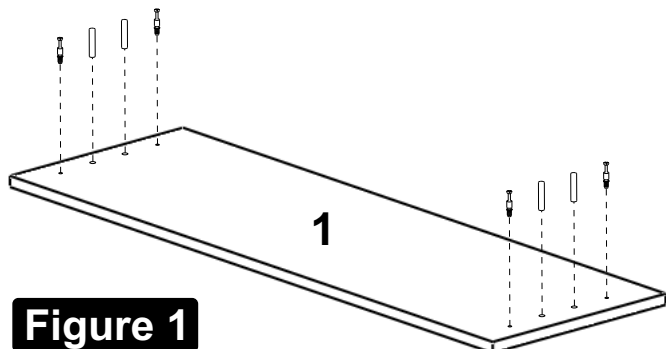
Exploded
View

Packing List		Qty
Wooden Boards (assorted sizes)		11x2
Board Screw (3.5 X 16 mm) Black		12
Minifix Housing		32
Minifix Bolt		32
Dowel		32
Door hinge		8
Handle		4
Handle Screw		8
Bullet Pins		0
Wall plug and screw		

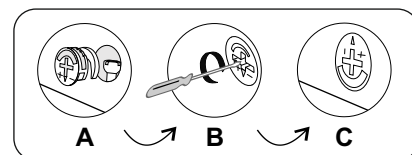
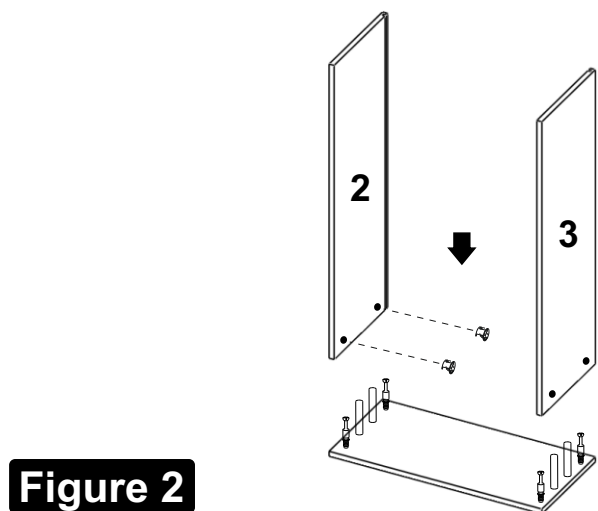
Useful Hints Before You Start:

1. Read all instructions carefully before beginning the assembly.
2. Follow each step in the correct order to avoid difficulties during the process.
3. Assemble the furniture on a clean, flat, and soft surface to prevent any damage to the parts.
4. Identify all boards and hardware items (such as nuts, bolts, hinges, dowels, etc.) before starting.

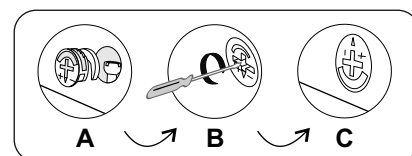
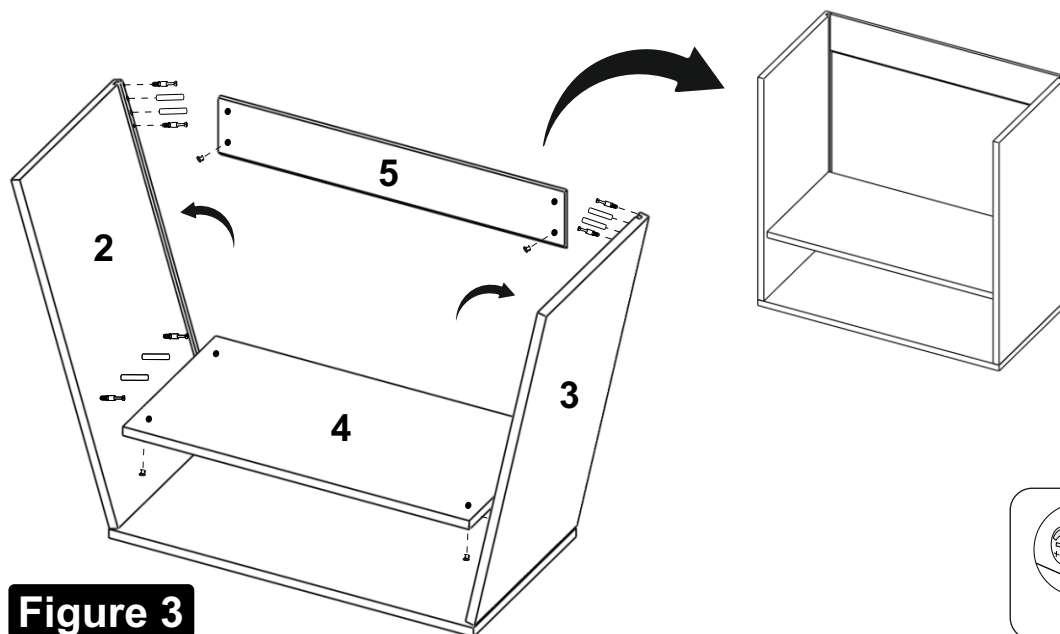
Step 1 : Insert **Dowels** and **Minifixes bolt** into **Board 1** as shown in **Figure 1**.



Step 2 : Keep **Board 2, 3 & 4** on **Board 1** as Shown in **Figure 2**. Fasten the **Minifix Housing** on **Board 2, 3 & 4**.



Step 3 : Fix **Minifixs & Dowels** on **Board 2 & 3** as shown in **Figure 3**. Tilt **Board 2 & 3** a little to fix **Board 4 & 5** between **Board 2 & 3**. Fasten the **Minifix Housings** as shown in figure below.



Step 4 : Slid the **Board 6 & 7** in the grooves of **Board 2 & 3**.

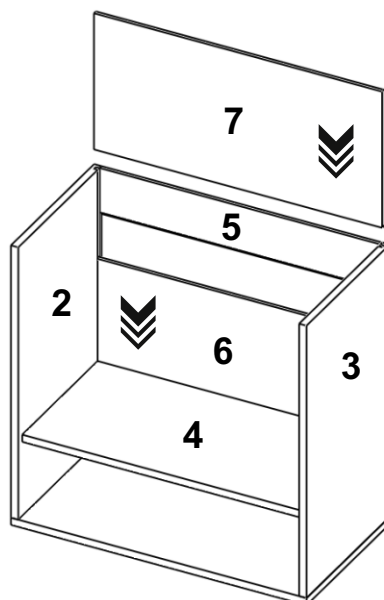


Figure 4

Step 5 : Insert **Dowels** and **Minifixs Bolt** into **Board 8** as shown in **Figure 5**.

Insert **Minifix Housings** in **Board 2 & 3** and join **Boards 8** as shown in figure, fasten minifixs housing in **Boards 2 & 3** with the help of screw driver as shown in figure below.

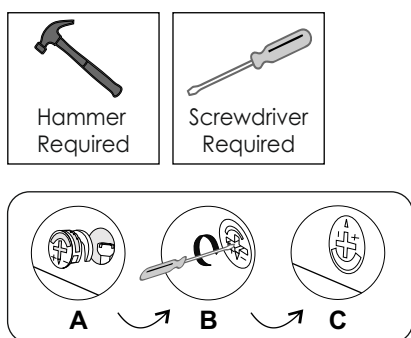
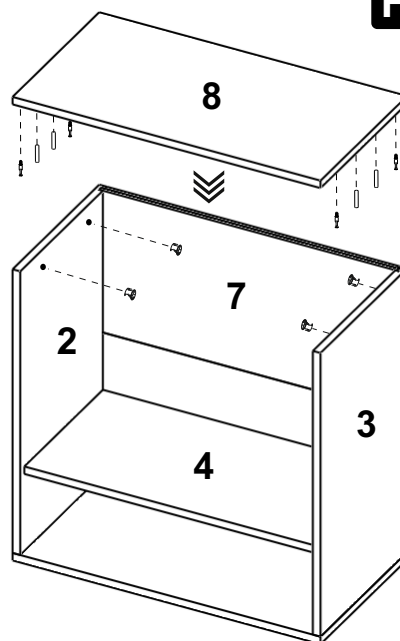


Figure 5



Step 6 : Join **Board 2 & 9** as shown in Figure below. Fix the **Door Hinges** with the help of **(2 x 4 screw)** on **Board 2 & 9** fasten it with Screw Driver as shown. Similarly affix the other doors (**Board 10 on Board 3**).

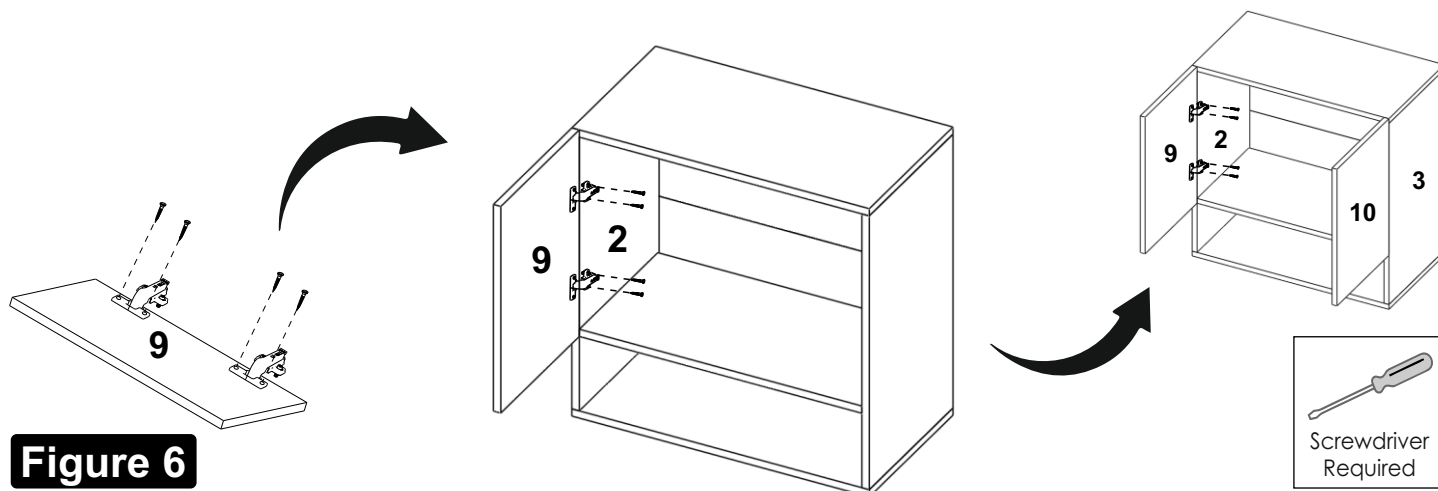


Figure 6

Step 7 : Fasten Handle with screw on **Board 9 & 10** (Doors). Similarly assemble the other unit.

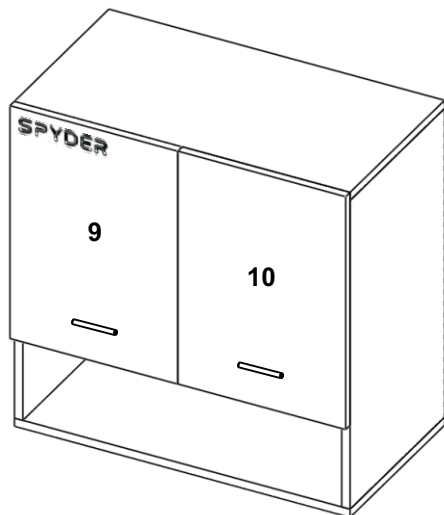


Figure 7



Step 8 : Affix **Board 11 & 12** on wall. Hang the both the cabinet assemblies onto the **Board 11 & 12** as shown in Figure 8.

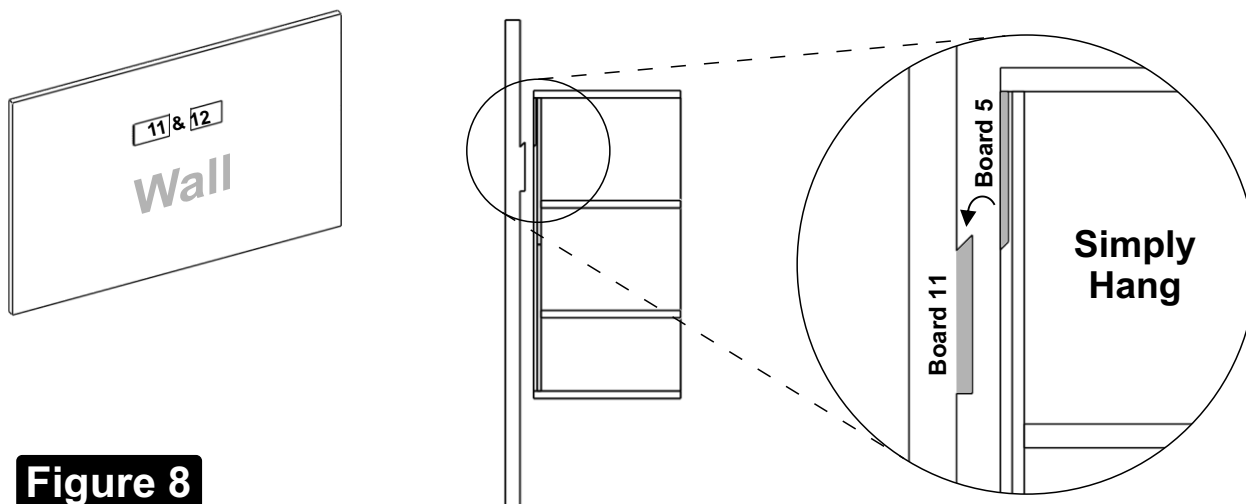


Figure 8

**“All we need is customers valueable feedback.
That’s how we’ll improve.”**

Need help in Assembling?

- Having trouble installing this product?
- Need a paid professional carpenter?
- You can now avail our paid installation service.
(Available at selected locations only)

Contact our support team



1800-572-3961



support@spydergreen.com

Return and Refund Policy

- Returns are accepted within 10 days of delivery.
- Refunds will be processed only if the delivered product is damaged, non-functional, and unused.
- Customers must provide evidence of the defect, such as clear photographs or videos that highlight the issue, when requesting a return or refund.
- The product must be returned in its original packaging and must not be further damaged.
- All accessories, manuals, and other included items must be returned in full and must not be missing.

Replacement Process & Conditions

Spyder Green provides an easy and hassle-free replacement process.

- A replacement can be requested if the item delivered is damaged, defective, not as described, or if a wrong item has been received within 10 days of delivery.
- We usually arrange a pickup of the original item and deliver the replacement at the same time, ensuring a smooth and hassle-free exchange experience.
- If the product was purchased from an e-commerce platform, you can place a replacement request directly through the 'Orders' section on that platform.
- We offer repair assistance through a scheduled technician visit, which is a chargeable service. If needed, the technician may replace defective parts. If the issue persists after replacement, we approve a full product replacement.
- Replacement is subject to stock availability. In case a replacement is not available, we may offer a refund as an alternative.

Warranty Terms and Conditions

All Spyder Green's products are covered under a 1-year warranty against manufacturing defects. The warranty is applicable only upon presentation of the original purchase invoice at the time of service.

Warranty Covers :

- Manufacturing and workmanship defects under normal household use
- Issues like color fading, termite or fungus

Warranty Does Not Cover :

- Damages due to misuse, mishandling, or negligence
- Incorrect customer-led assembly
- Continuous exposure to moisture, heat, or chemicals
- Damage caused by natural calamities
- Normal wear and tear from regular use
- Damage due to unauthorized modifications or alterations
- Wood expansion/contraction or natural defects (grain, joint separation)

This warranty is non-transferable, valid only within India, and applicable exclusively to the original end-user customer. Replacement parts will be provided free of cost for covered issues; however, technician visit charges may apply.



Scan for Installation Video Link

Go to our You Tube page,
Search video by entering your Product SKU Number.